

Polling Booth Location Map

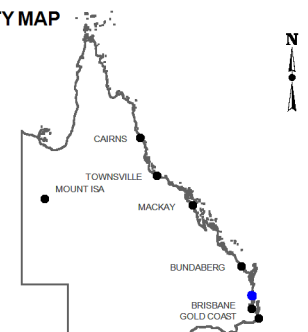
**ELECTORAL DISTRICT
BUDERIM**

Polling Booths: 19
Electors : 29,347
Close of Roll: 25 February 2012

LEGEND

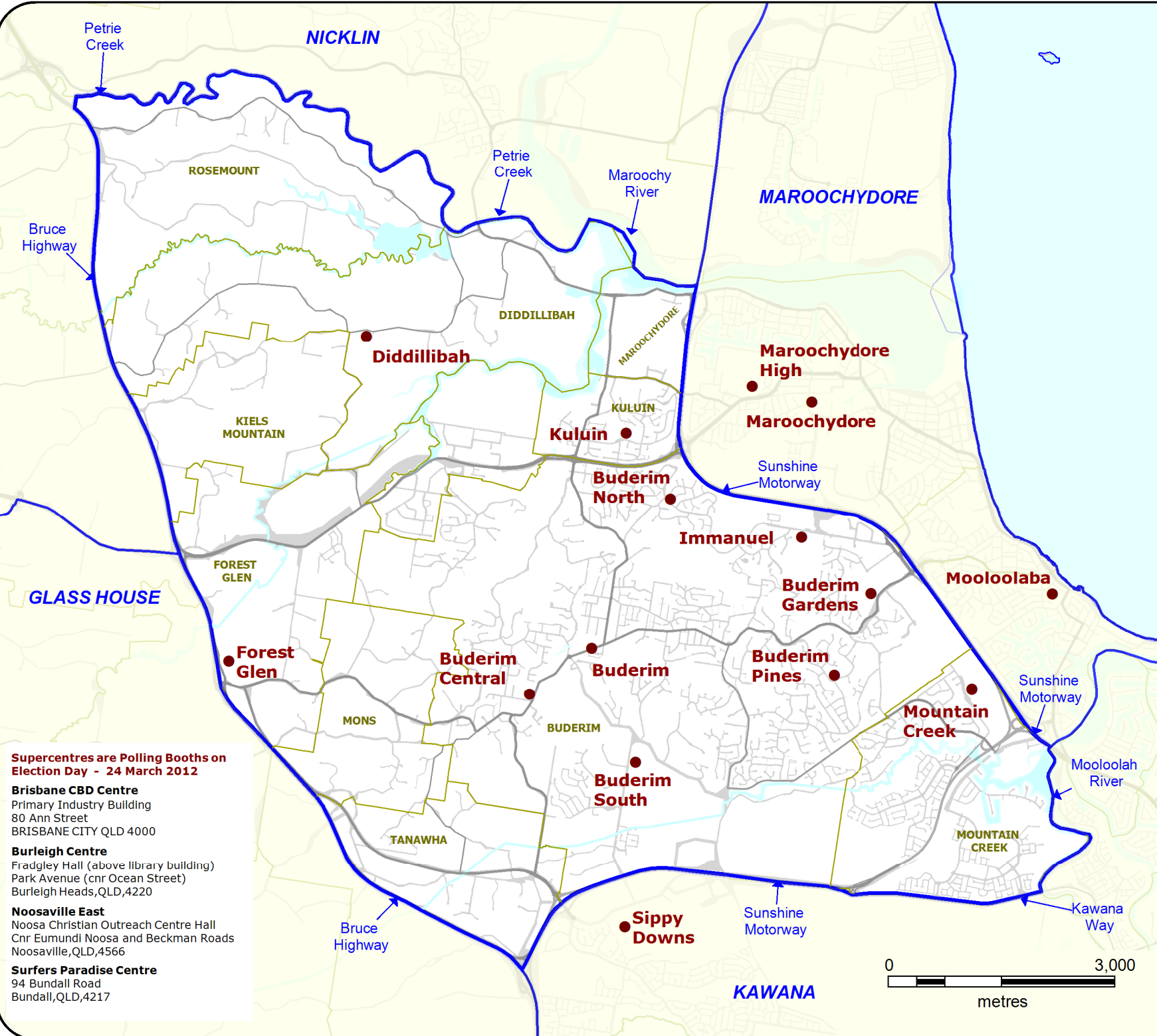
- **Polling Booth Name**
- **District Boundary**
- DISTRICT NAME* **Adjacent District**

LOCALITY MAP



DISCLAIMER

While every care is taken to ensure the accuracy of this data, the Electoral Commission of Queensland (ECQ) makes no representations or warranties about its accuracy, reliability, completeness or suitability for any particular purpose and disclaims all responsibility and all ability (including, without limitation, liability in negligence) for all expenses, losses, damages (including indirect and consequential damage) and cost which might be incurred as a result of the data being inaccurate or incomplete in any way and for any reason. This map has been produced by the ECQ as a guide to show the location of the Electoral District Boundaries and Polling Booth locations. It is not an official map of Electoral District Boundaries. Official maps of Electoral District are available from SmartMap, Department of Environment and Resource Management, Woolloongabba.



Supercentres are Polling Booths on Election Day - 24 March 2012

Brisbane CBD Centre
Primary Industry Building
80 Ann Street
BRISBANE CITY QLD 4000

Burleigh Centre
Fradgley Hall (above library building)
Park Avenue (cnr Ocean Street)
Burleigh Heads, QLD, 4220

Noosaville East
Noosa Christian Outreach Centre Hall
Cnr Eumundi Noosa and Beckman Roads
Noosaville, QLD, 4566

Surfers Paradise Centre
94 Bundall Road
Bundall, QLD, 4217

