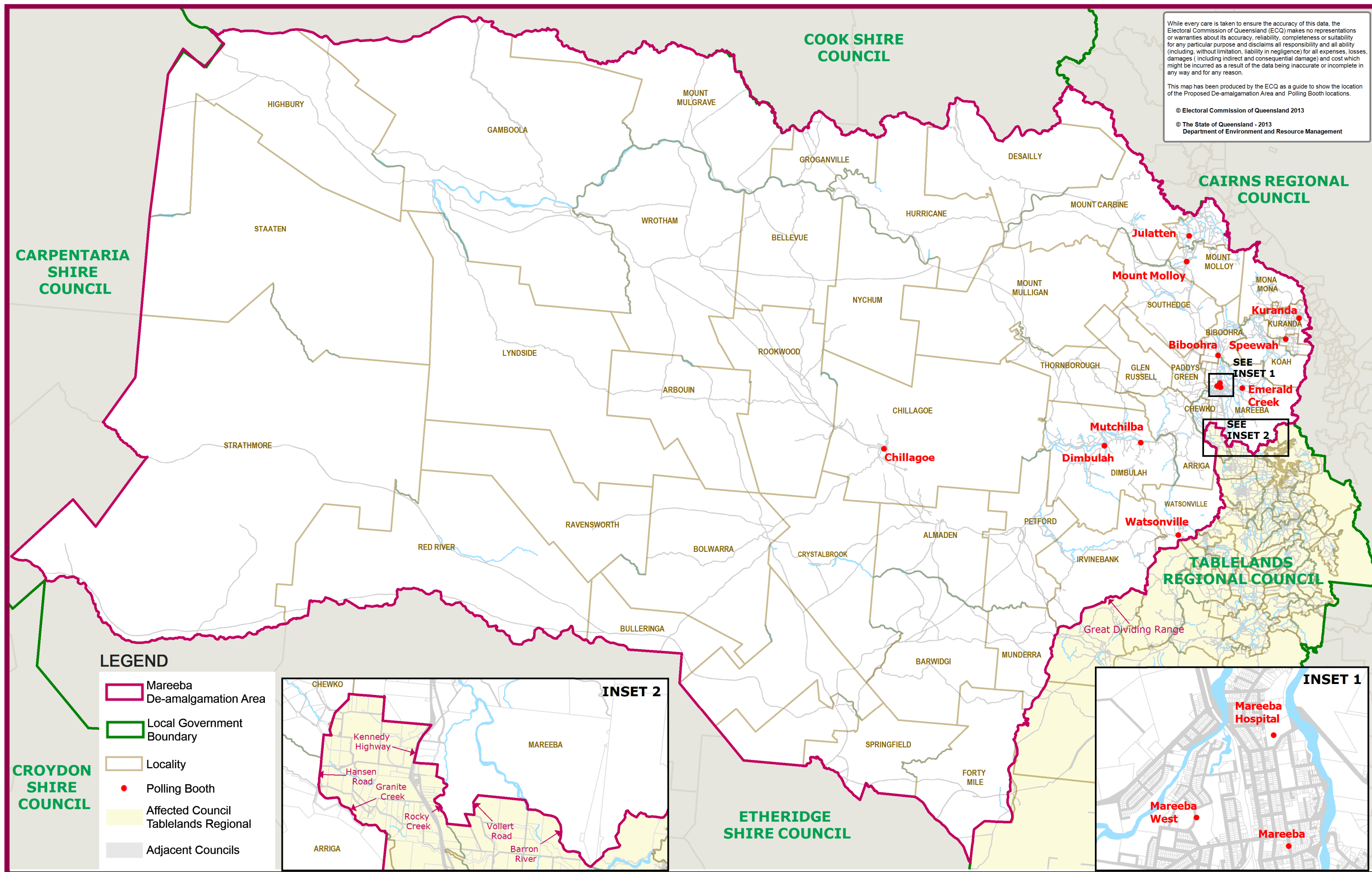


While every care is taken to ensure the accuracy of this data, the Electoral Commission of Queensland (ECQ) makes no representations or warranties about its accuracy, reliability, completeness or suitability for any particular purpose and disclaims all responsibility and all ability (including, without limitation, liability in negligence) for all expenses, losses, damages (including indirect and consequential damage) and cost which might be incurred as a result of the data being inaccurate or incomplete in any way and for any reason.

This map has been produced by the ECQ as a guide to show the location of the Proposed De-amalgamation Area and Polling Booth locations.

© Electoral Commission of Queensland 2013  
 © The State of Queensland - 2013  
 Department of Environment and Resource Management



**LEGEND**

- Mareeba De-amalgamation Area
- Local Government Boundary
- Locality
- Polling Booth
- Affected Council Tablelands Regional
- Adjacent Councils

