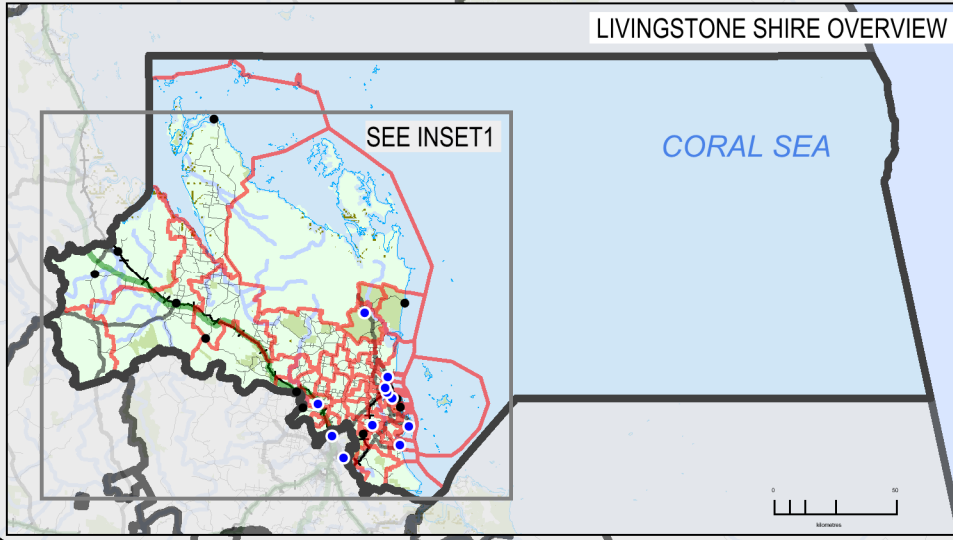
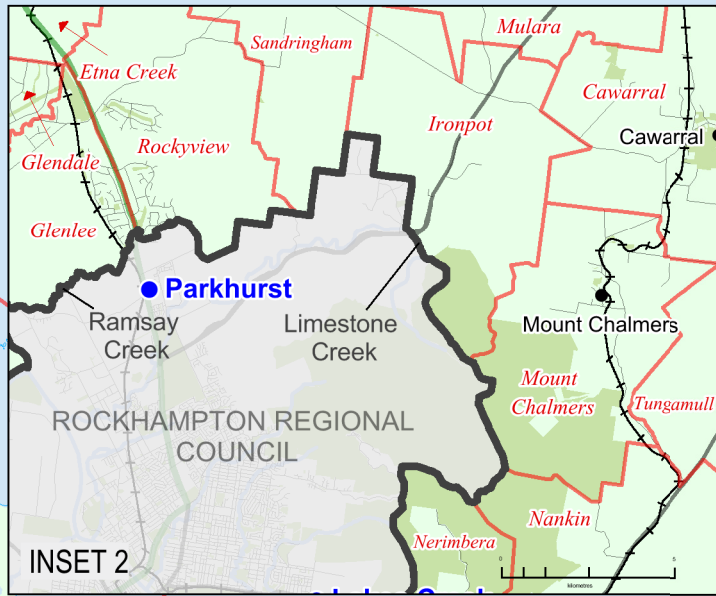
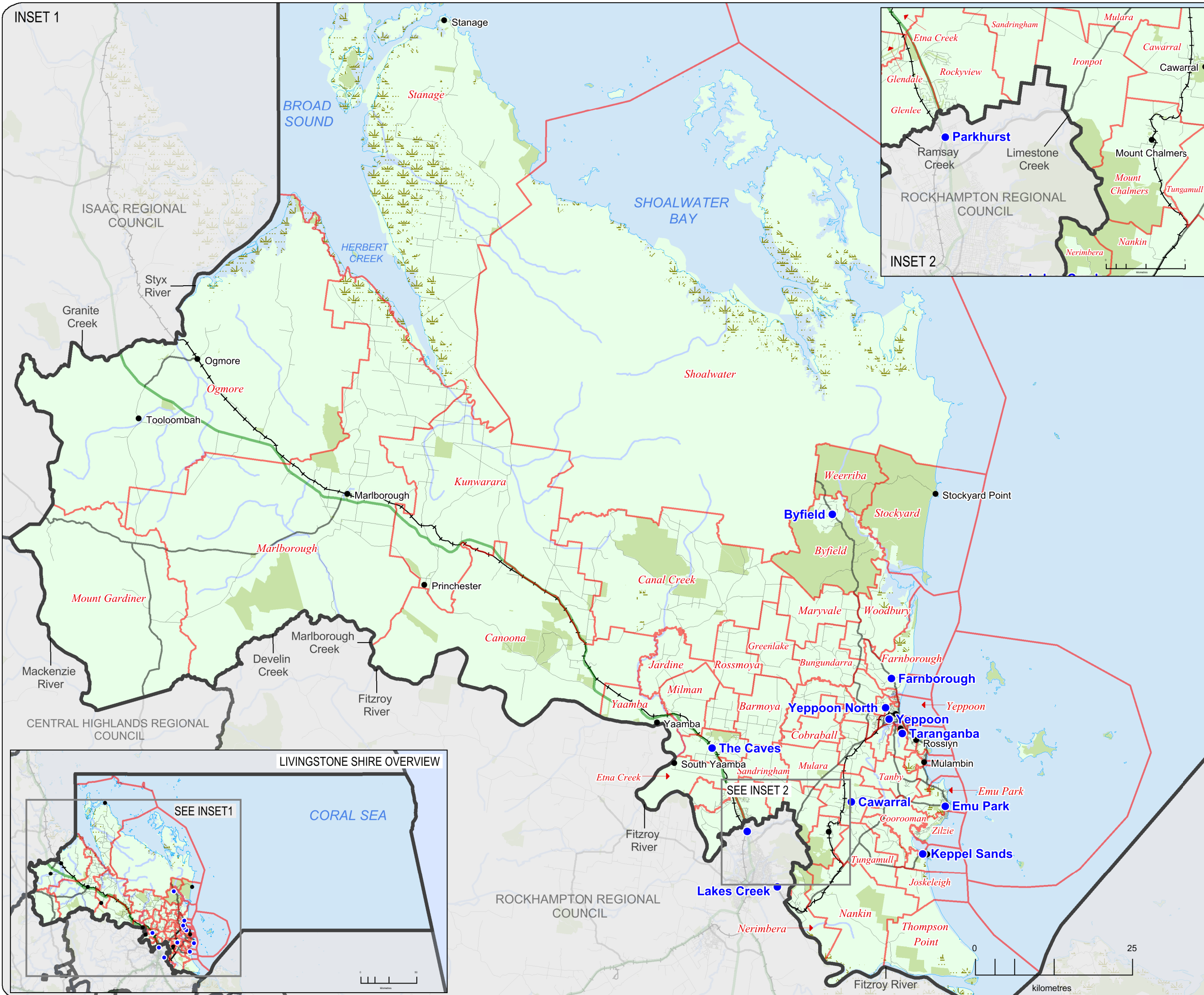


INSET 1

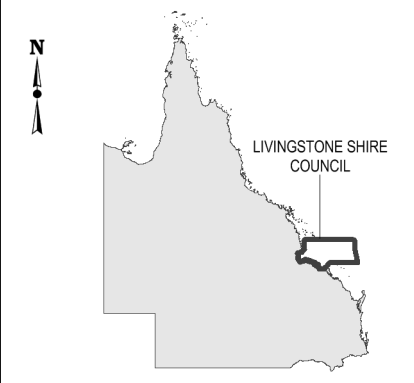


**2016**  
**QUEENSLAND**  
**LOCAL GOVERNMENT ELECTIONS**  
**LIVINGSTONE SHIRE**  
**COUNCIL**

**Polling Date: 19 March 2016**

- Polling Booth
- Town
- Local Government Area Boundary
- Locality Boundary
- Highway
- Major Road
- Minor Road
- Railway
- Watercourse / Waterbody
- Reserve / Park

Location Map



**DISCLAIMER**  
 While every care has been taken to ensure the accuracy of this product, the Electoral Commission Queensland (ECQ) makes no representations or warranties about its accuracy, reliability, completeness or suitability for any particular purpose and disclaims all responsibility and all liability (including, without limitation, liability in negligence) for all expenses, losses, damages (including indirect and consequential damage) and cost which might be incurred as a result of the data being inaccurate or incomplete in any way and for any reason.

This map has been produced by the ECQ as a guide only, to show electoral boundaries and polling booths. It is not an official electoral boundary map.

© Electoral Commission of Queensland 2015 (Local Government Change Commission)  
 © The State of Queensland - 2015 (Department of Natural Resources and Mines)  
 © 2015 Pitney Bowes Software Pty Ltd. All rights reserved

